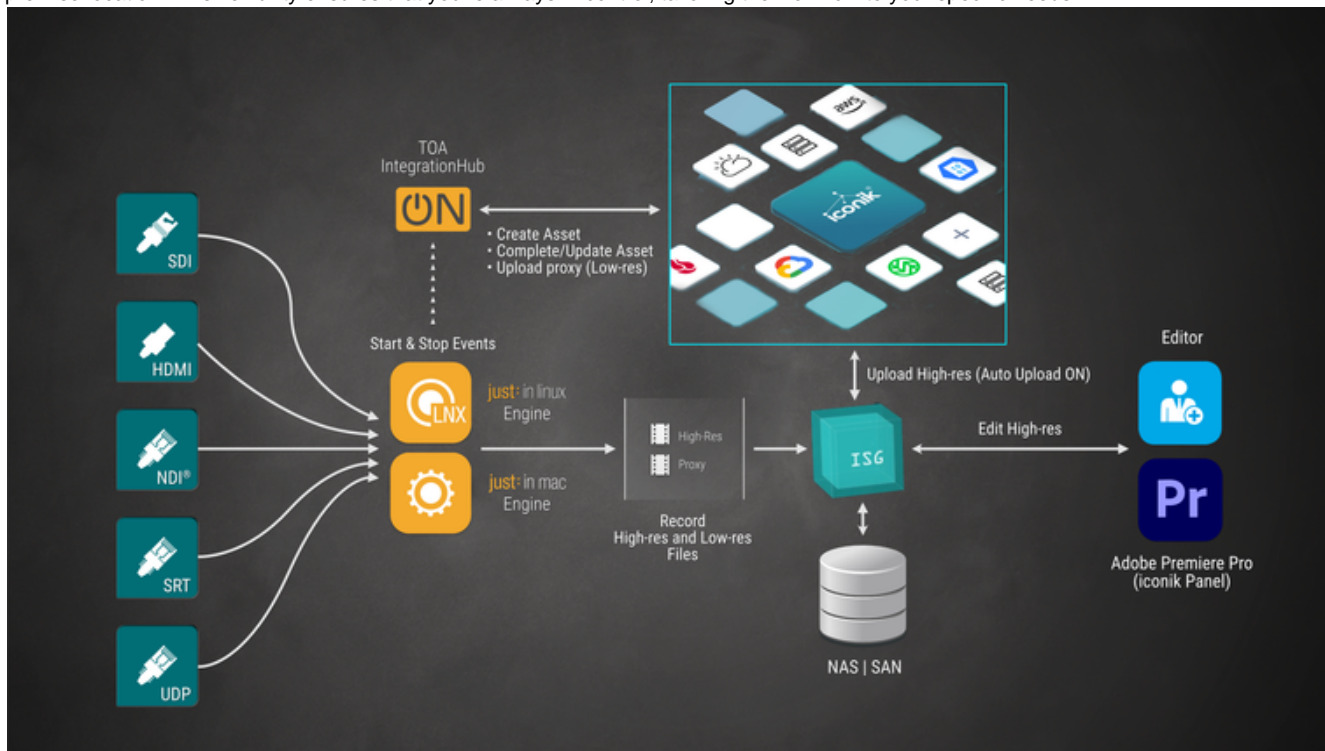


[JIM] Iconik Integration v.6.0

Driven by the desire for efficient automation, **just:in mac** effortlessly manages asset uploads and Proxy generation, highly reducing the solution's complexity, while increasing its overall efficiency. This automation eliminates manual intervention and accelerates your content's availability for seamless post-production workflows. Depending on your **ISG (Iconik Storage Gateway)** upload setting, the magic doesn't stop there. If configured, the high-resolution file can automatically make its way to iconik, or alternatively, it remains securely in its on-premise location. This flexibility ensures that you're always in control, tailoring the workflow to your specific needs.



Setup

The **iconik** integration has undergone a comprehensive rewrite in **just:in mac v.6.0** to enhance simplicity and efficiency. This section provides a detailed description of each configuration step.

ISG

The **iconik Storage Gateway ("ISG")** manages the upload of high-resolution media. Depending on its configuration within the **iconik** admin settings, the upload process can occur automatically or manually. The integration of **just:in mac** with Iconik necessitates a minimum of one configured Storage within **iconik**, which must be actively managed with an **ISG**.

TOA Integration Hub

The **ToolsOnAir Integration Hub** is a recent addition to our software suite, facilitating seamless communication between the **just:in mac engine** and the **iconik Media and Collaboration** platform. It operates as a Docker container and can be deployed on any Mac or Linux machine within the network. For its functionality, the host of the Docker container must have internet access and the necessary permissions to access the actual recording files, as it manages the upload of the specified **Proxy** files by interfacing with the **iconik API**.

i The deployment and configuration of this integration component is managed by a specialised **ToolsOnAir** System Engineer.

Just Control

In the **Just Control** Application, the following configuration tasks need to be completed:

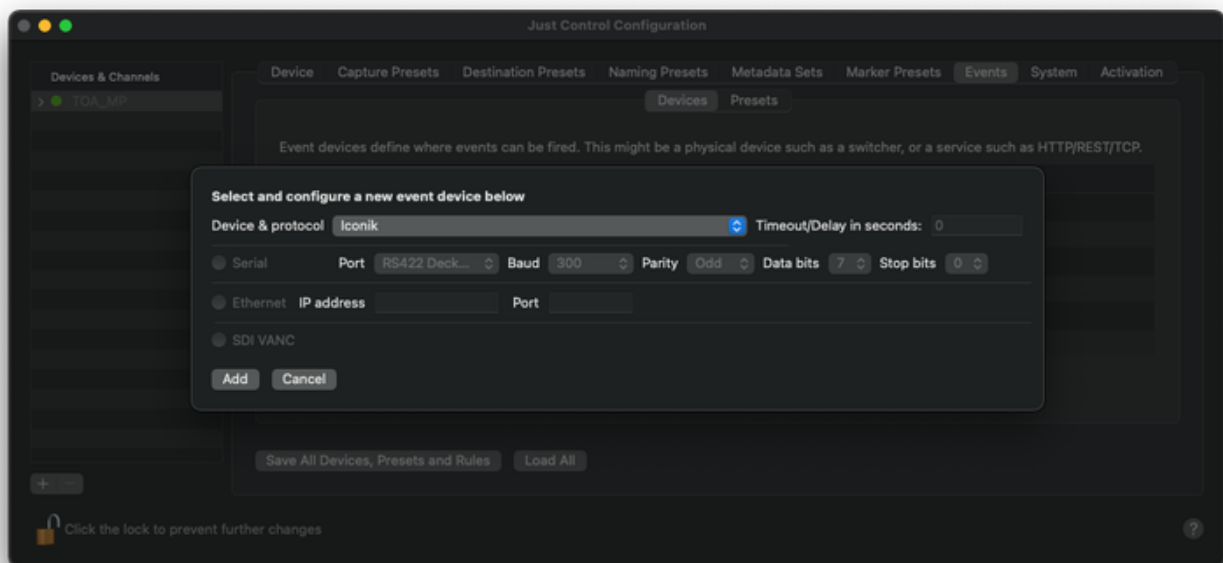
- Create an **Iconik Event Device**
- Create two **Iconik Event Presets**

Configuration Panel

Open the **Just Control Configuration** panel.

Events

Move to the “**Events**” tab and then create a new **Iconik Event Device**.



Once that is done, switch to the “**Events->Presets**” tab and create a new **Event** with the following settings:

1. Choose the **Iconik Event Device** and press the “**Add**” button
2. Then select “**New Asset**” as the **Event Type**
3. Then enter the **IP address** of the machine running the **ToolsOnAir Integration Hub**
4. Go to the **iconik** admin page and copy the **Storage ID** into the “**Storage ID**” field
5. Then “**Choose/Add**” the “**ISG Mount Point**”



Save this **Event** by pressing the “**Finish**” button. Next, create a second **Event** with the following settings:

1. Choose the **Iconik Event Device** and press the “**Add**” button
2. Then select “**Finish Asset**” as the **Event Type**
3. Then enter the **IP address** of the machine running the **ToolsOnAir Integration Hub**
4. Go to the **iconik** admin page and copy the “**iconik-files-gcs ID**” into the “**Destination Storage ID**” field
5. Choose “**GCS**” as the **Destination Storage Method**
6. Then “**Choose/Add**” the “**ISG Mount Point**”
7. Go to the **iconik** admin page and copy the “**iconik-proxies-gcs ID**” into the “**Proxy Storage ID**” field

1. Name the preset

2. Add events A preset can consist of one or more events. For example, a preset can switch several outputs on a video router, or send one or more GPI events, or even combine video router and GPI events in a single preset.

3. Configure Events

Iconik ¹

Service Host Port Event ²

Destination Storage ID

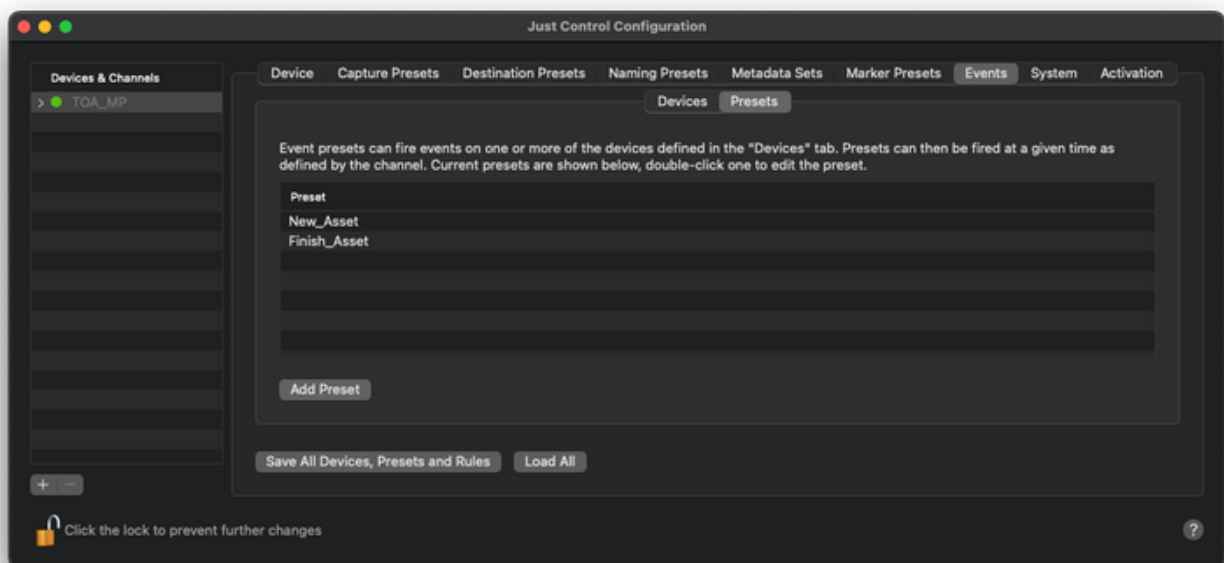
Destination Storage Method ⁵

ISG Mount Point

Proxy Storage ID

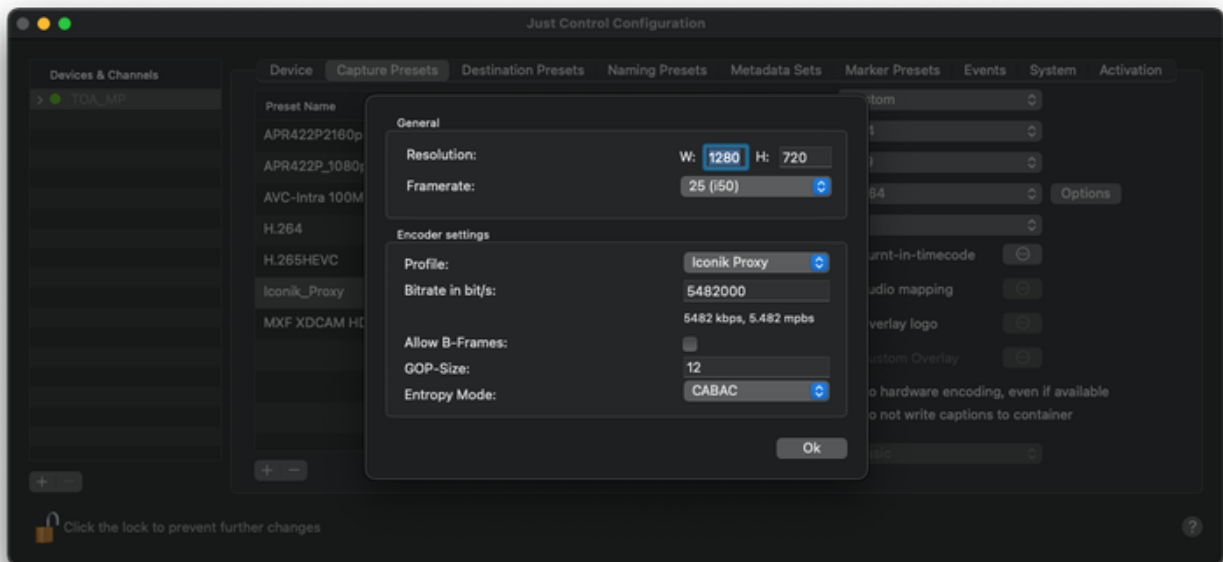
4. Finish When you have added all events to the preset, click "Finish" to confirm all of the changes to the preset which can then be used by a channel to trigger the given device events.

Save this **Event** by pressing the “**Finish**” button. Now you should see two **Event Presets**:

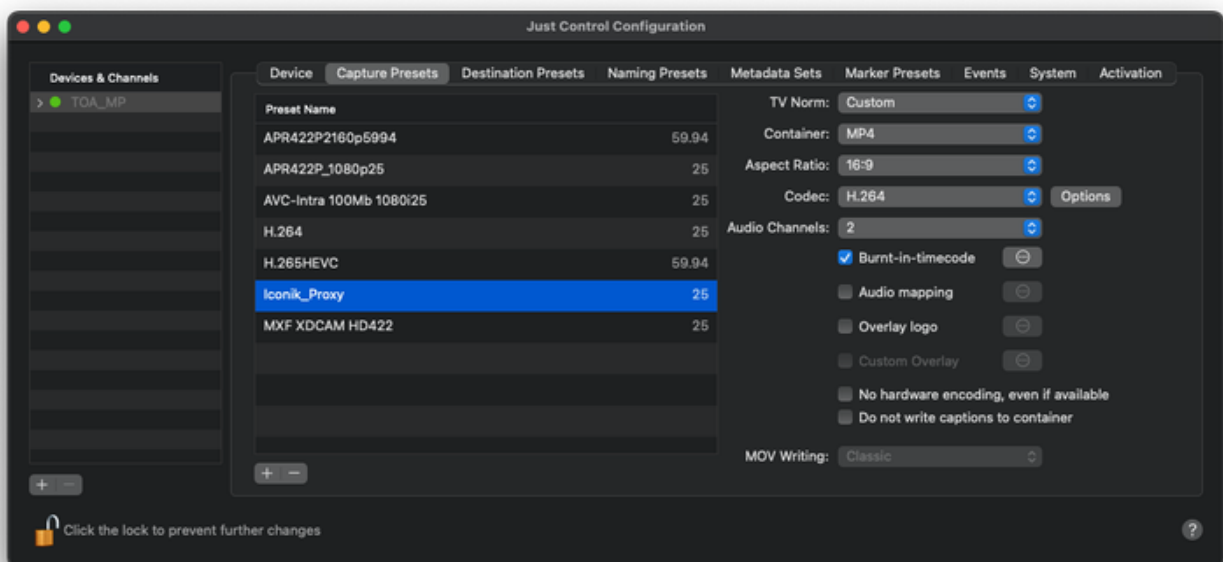


Capture Presets

Switch to the “**Capture Presets**” tab and create a new **H.264 based Preset**. Start with using “**Custom**” as the “**TV Norm**” and then adjust the **H.264 specific settings** accordingly:



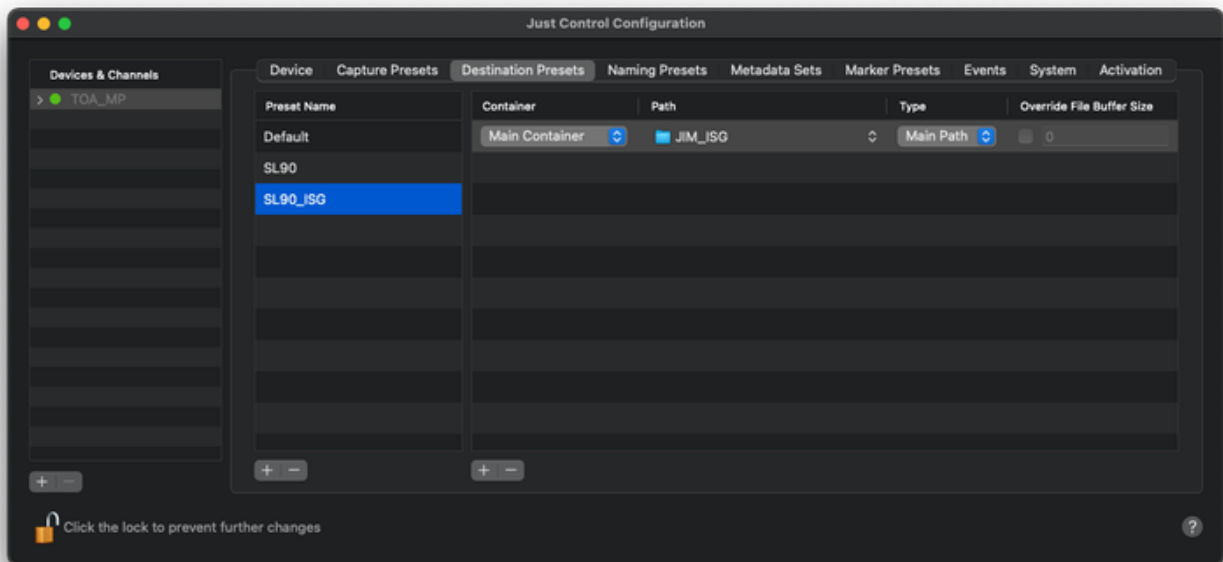
Press the “Ok” button, select the amount of **Audio Channels** and optionally choose one of the **Capture Preset** options such as the “**Burnt-in timecode**” feature.



i You may use any other available **Recording** format as a High-res **Capture Preset**.

Destination Preset

Lastly, switch to the “**Destination Presets**” tab to create a new **Destination Preset**, pointing to the same destination as the configured **ISG** (Iconik Storage Gateway).



Once the **Events**, **Capture**- and **Destination Presets** have been created, we can move on by switching back to the **Just Control** user interface.

Channel Inspector

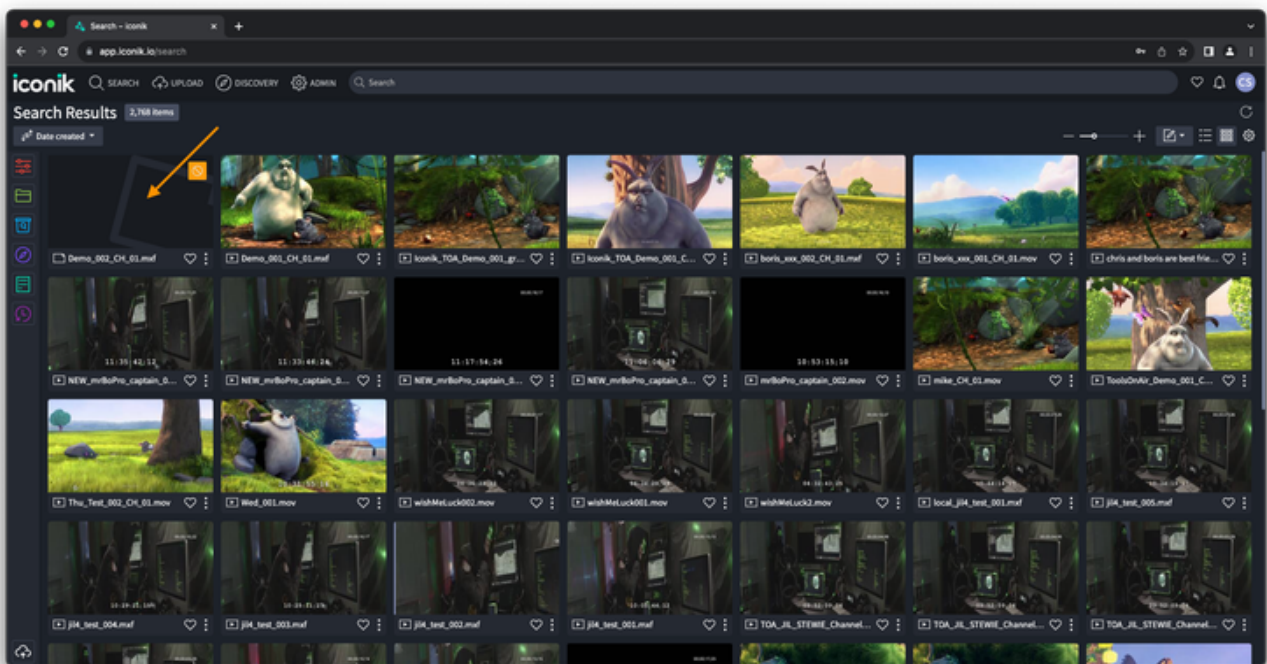
In the **Just Control** application, configure the **Channels** with the respective **Presets**. Note that this integration is compatible with both single and multichannel setups.



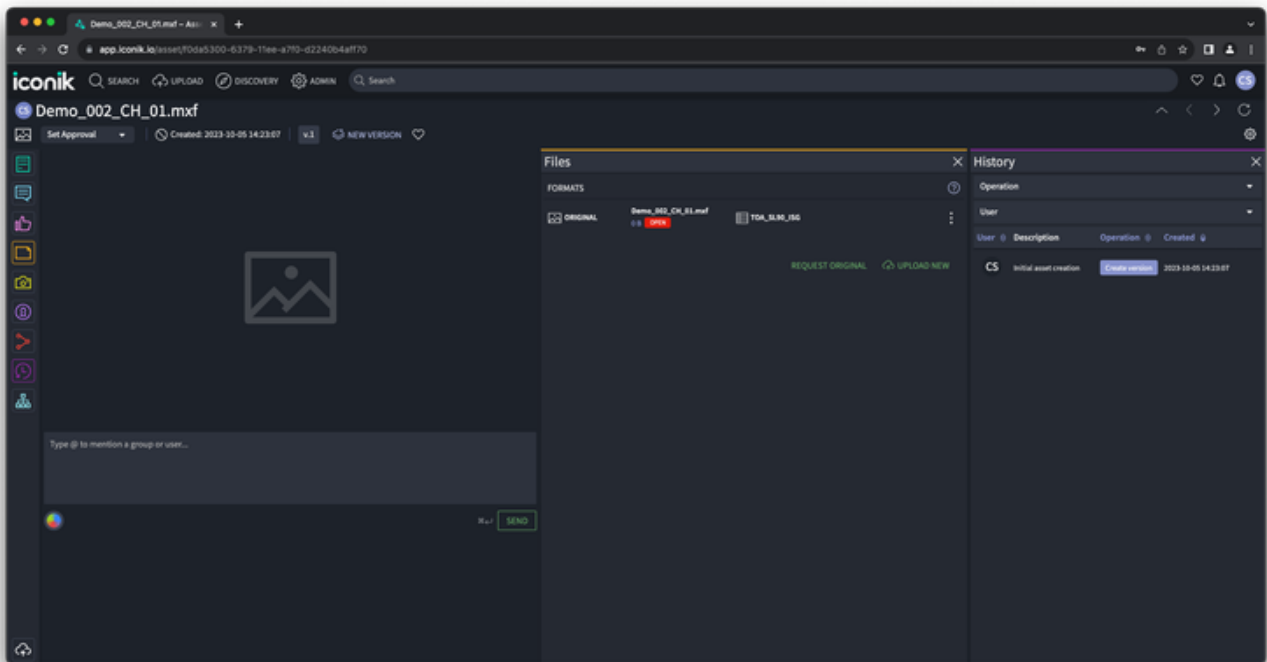
Once the **Recording** is started:



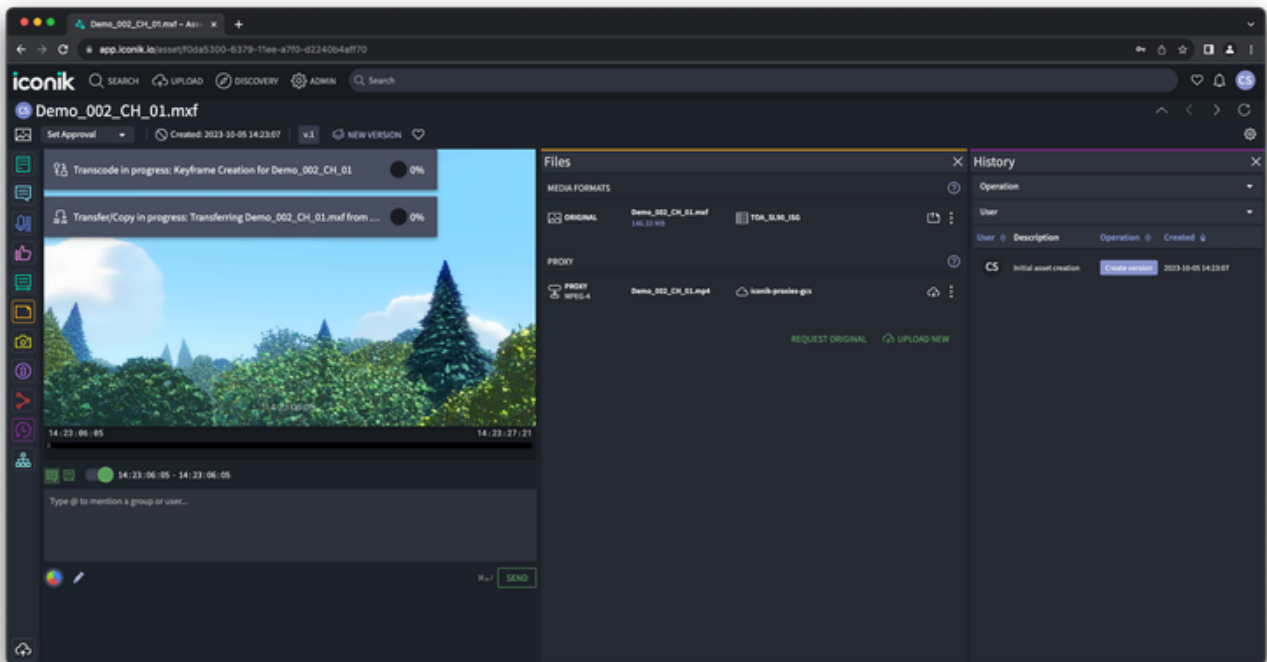
The asset will be registered within the **iconik** system, and users can already see that there is a new incoming **Asset**.



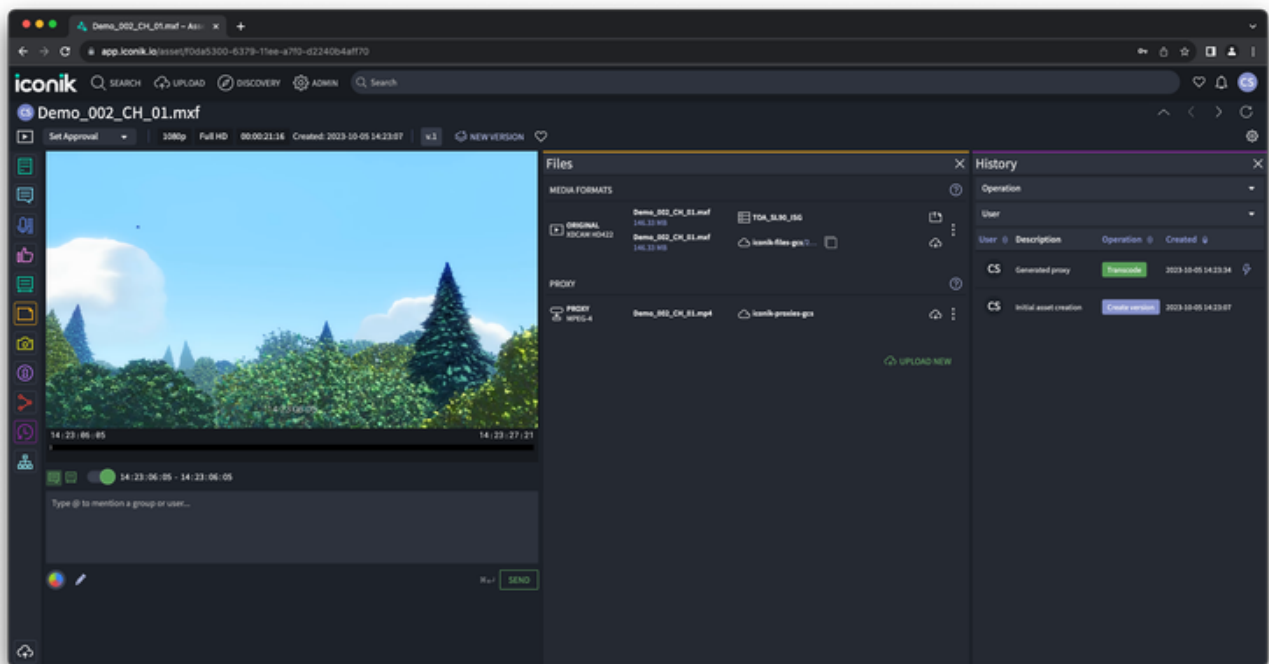
The related **Asset** can be opened as well.



Upon stopping the **Recording**, the **Proxy** file will automatically be uploaded and once the upload process is done, a preview becomes available.



The file can already be played back within the web player and depending on the **ISG auto-upload setting**, the actual High-res file will be uploaded as well.



Please don't hesitate to reach out if you need any clarification regarding this integration.